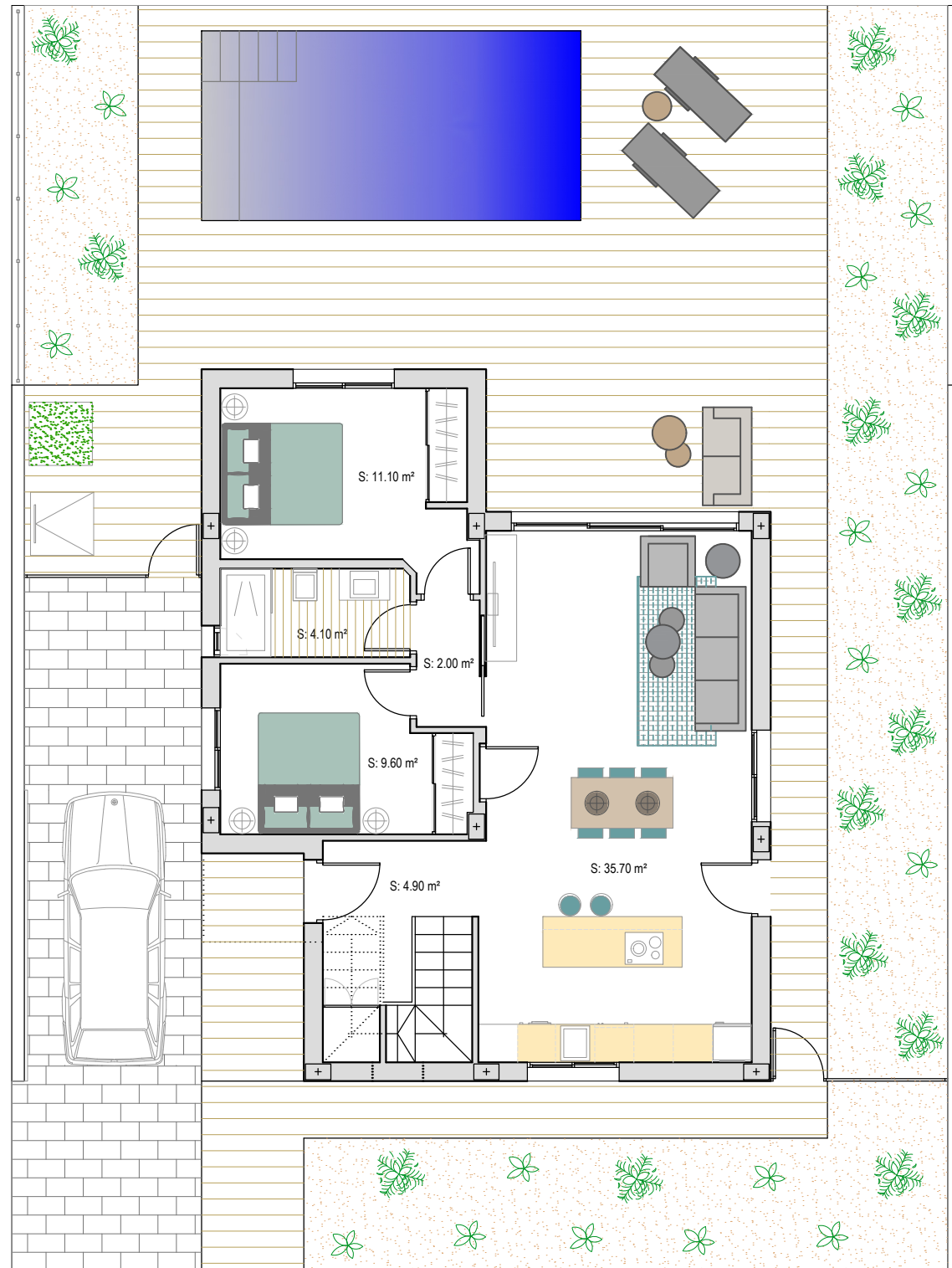
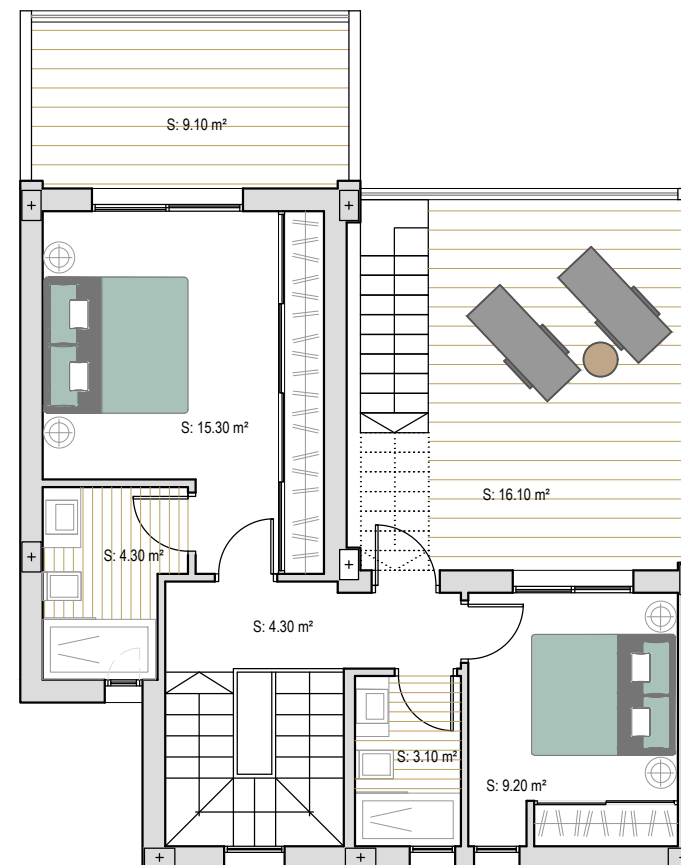


## VILLA FRONTLINE SOLARIUM

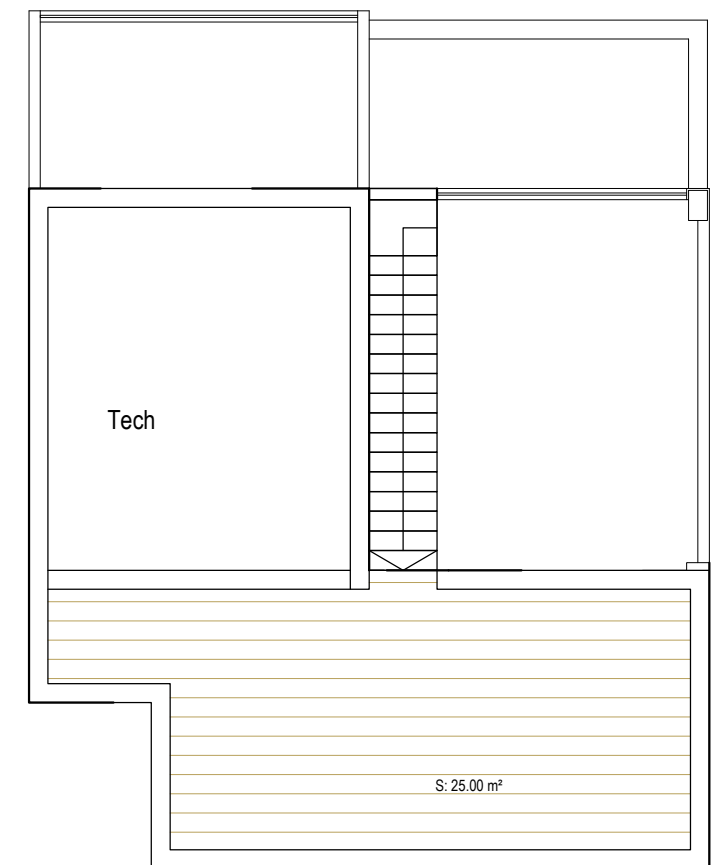
Ground floor:	84'48 m <sup>2</sup>
First floor:	50'57 m <sup>2</sup>
<b>BUILD SIZE:</b>	<b>135'00 m<sup>2</sup></b>
Solarium 1:	16'10 m <sup>2</sup>
Solarium 2:	25'00 m <sup>2</sup>
Terrace:	9'20 m <sup>2</sup>
Garden:	189'05 m <sup>2</sup>
Pool:	18'00 m <sup>2</sup>
<b>TOTAL:</b>	<b>372'45 m<sup>2</sup></b>
Plot:	300.00 m <sup>2</sup>



Ground floor



First floor



Solarium