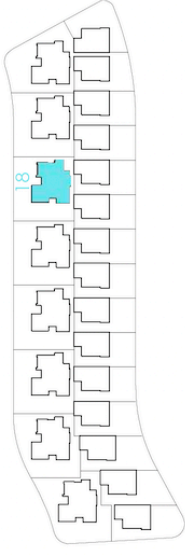




# Santa Rosalía

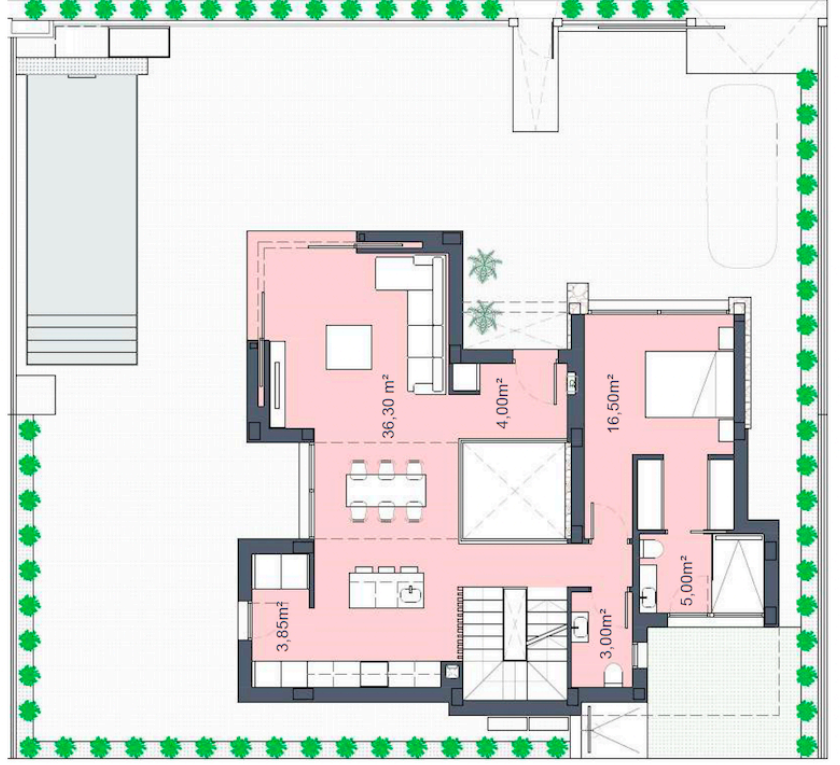
lake and life resort



FIRST FLOOR



GROUND FLOOR



## SURFACES

| VILLA 18                           |  | 311,00        | m2        |
|------------------------------------|--|---------------|-----------|
| construction surface               |  |               |           |
| Ground floor                       |  | 109,00        | m2        |
| First floor                        |  | 40,00         |           |
| Basement                           |  | 103,00        | m2        |
| <b>TOTAL INTERIOR</b>              |  | <b>252,00</b> | <b>m2</b> |
| Outdoor spaces on the ground floor |  | 202,00        | m2        |
| Terraces first floor               |  | 40,80         | m2        |
| Solarium                           |  | 45,00         | m2        |
| <b>TOTAL TERRACES</b>              |  | <b>287,80</b> | <b>m2</b> |

Documento de carácter informativo, no contractual. Puede sufrir variaciones por razones técnicas, legales o comerciales. El mobiliario y los electrodomésticos son decorativos y no están incluidos.

This plan is for illustration purposes only and may be modified for technical, legal or commercial reasons. The furniture and appliances shown are purely decorative and are not included.



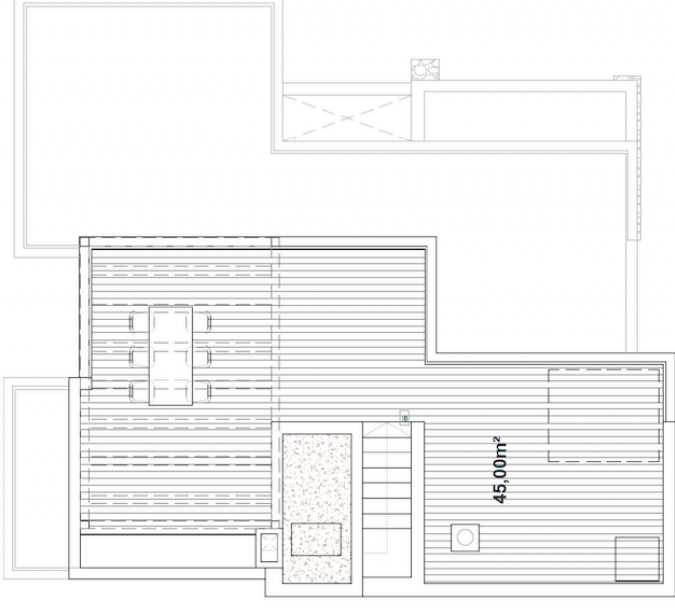
**José Díaz García**  
CONSTRUCTORA | creamos espacio

santarosalía.life

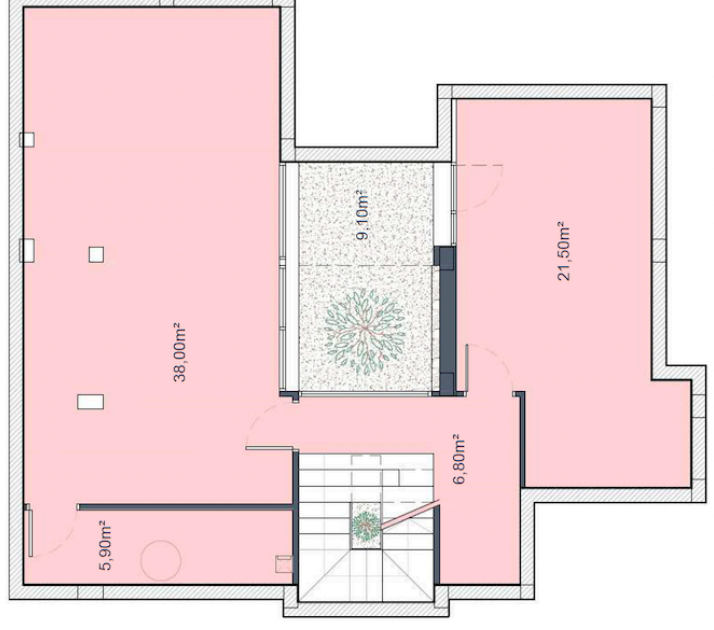


# Santa Rosalía

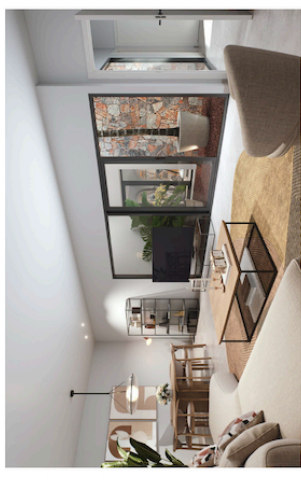
lake and life resort



SOLARIUM (without pergola)



BASEMENT



## SURFACES

|                                    |               |           |
|------------------------------------|---------------|-----------|
| <b>VILLA 18</b>                    | <b>311,00</b> | <b>m2</b> |
| construction surface               |               |           |
| Ground floor                       | 109,00        | m2        |
| First floor                        | 40,00         |           |
| Basement                           | 103,00        | m2        |
| <b>TOTAL INTERIOR</b>              | <b>252,00</b> | <b>m2</b> |
| Outdoor spaces on the ground floor |               |           |
| Terraces first floor               | 202,00        | m2        |
| Solarium                           | 40,80         | m2        |
|                                    | 45,00         | m2        |
| <b>TOTAL TERRACES</b>              | <b>287,80</b> | <b>m2</b> |

Documento de carácter informativo, no contractual. Puede sufrir variaciones por razones técnicas, legales o comerciales. El mobiliario y los electrodomésticos son decorativos y no están incluidos.

This plan is for illustration purposes only and may be modified for technical, legal or commercial reasons. The furniture and appliances shown are purely decorative and are not included.



**José Díaz García**  
CONSTRUCTORA | creamos espacio

santarosalía.life