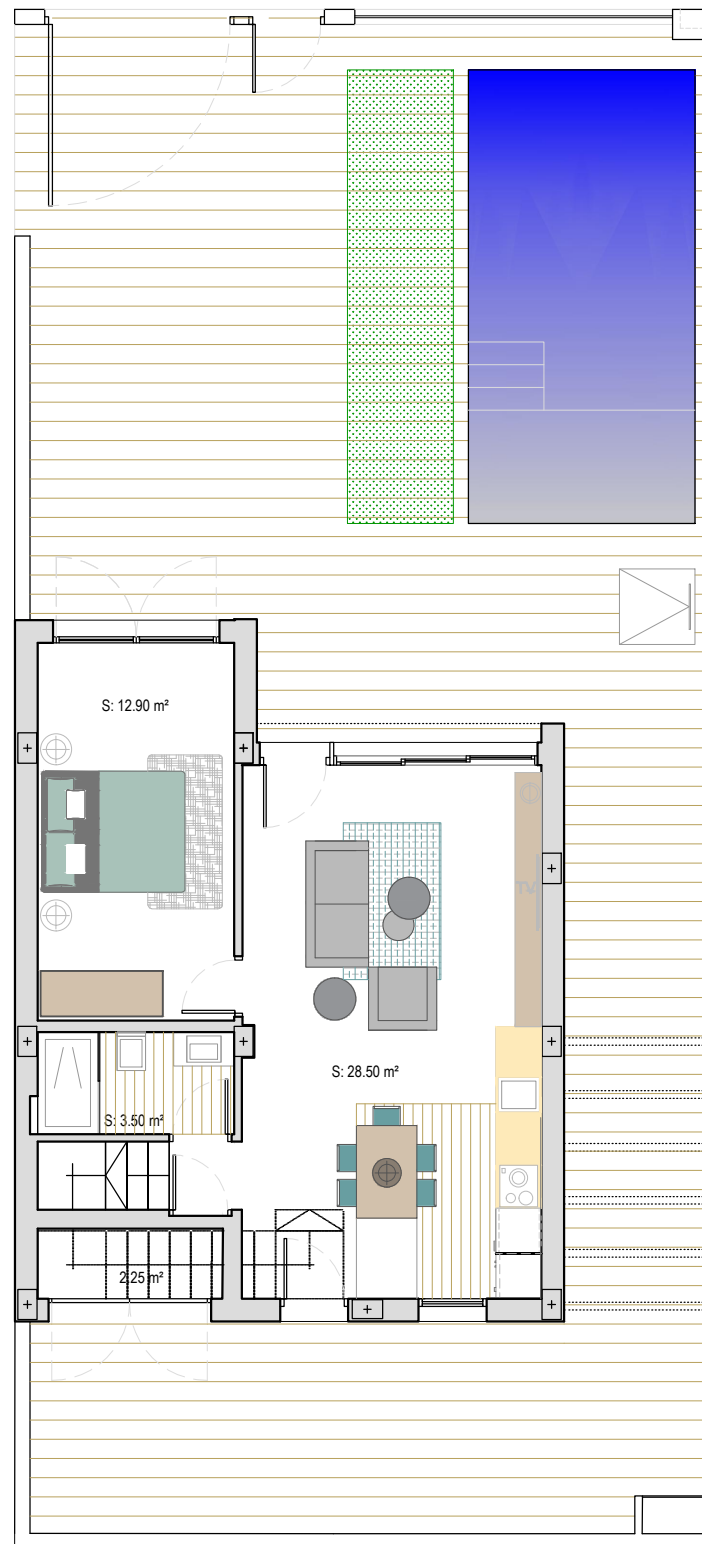


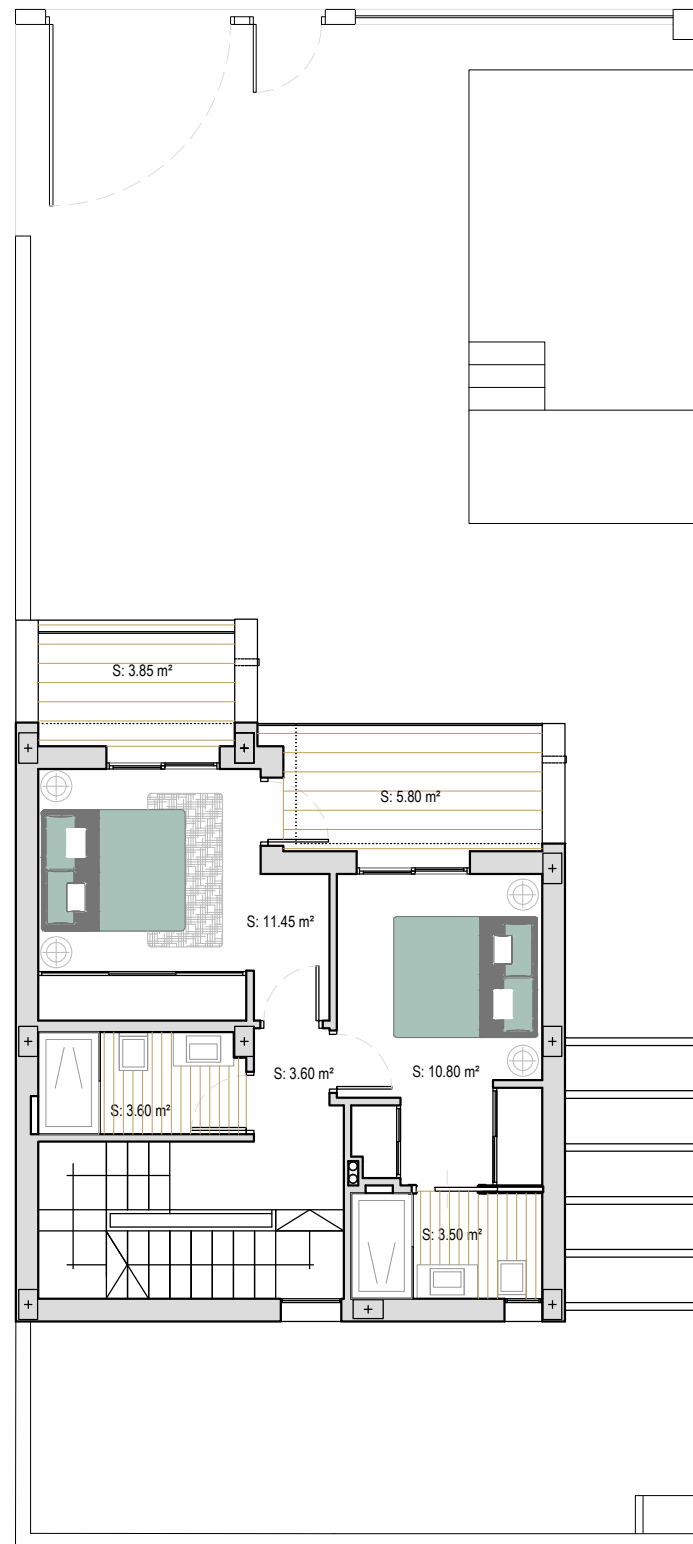
L.A. BEACH

VILLA C

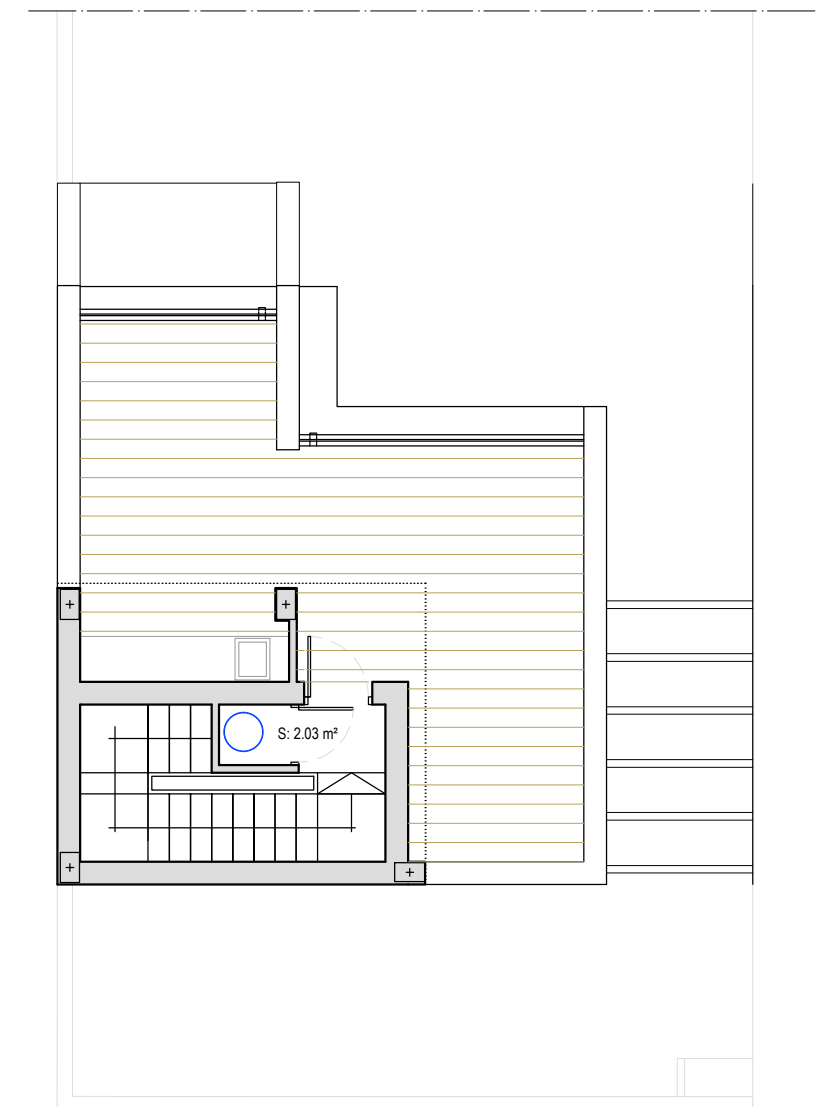
Ground floor:	55'35 m ²
Storeroom:	3'78 m ²
First floor:	50'09 m ²
Top floor/ Summer kitchen:	9'03 m ²
BUILD SIZE:	118'25 m²
Solarium:	30'00 m ²
Garden:	102'00 m ²
Pool:	18'00 m ²
TOTAL:	268.25 m²
Plot:	187'38 m ²



Ground floor



First floor



Solarium