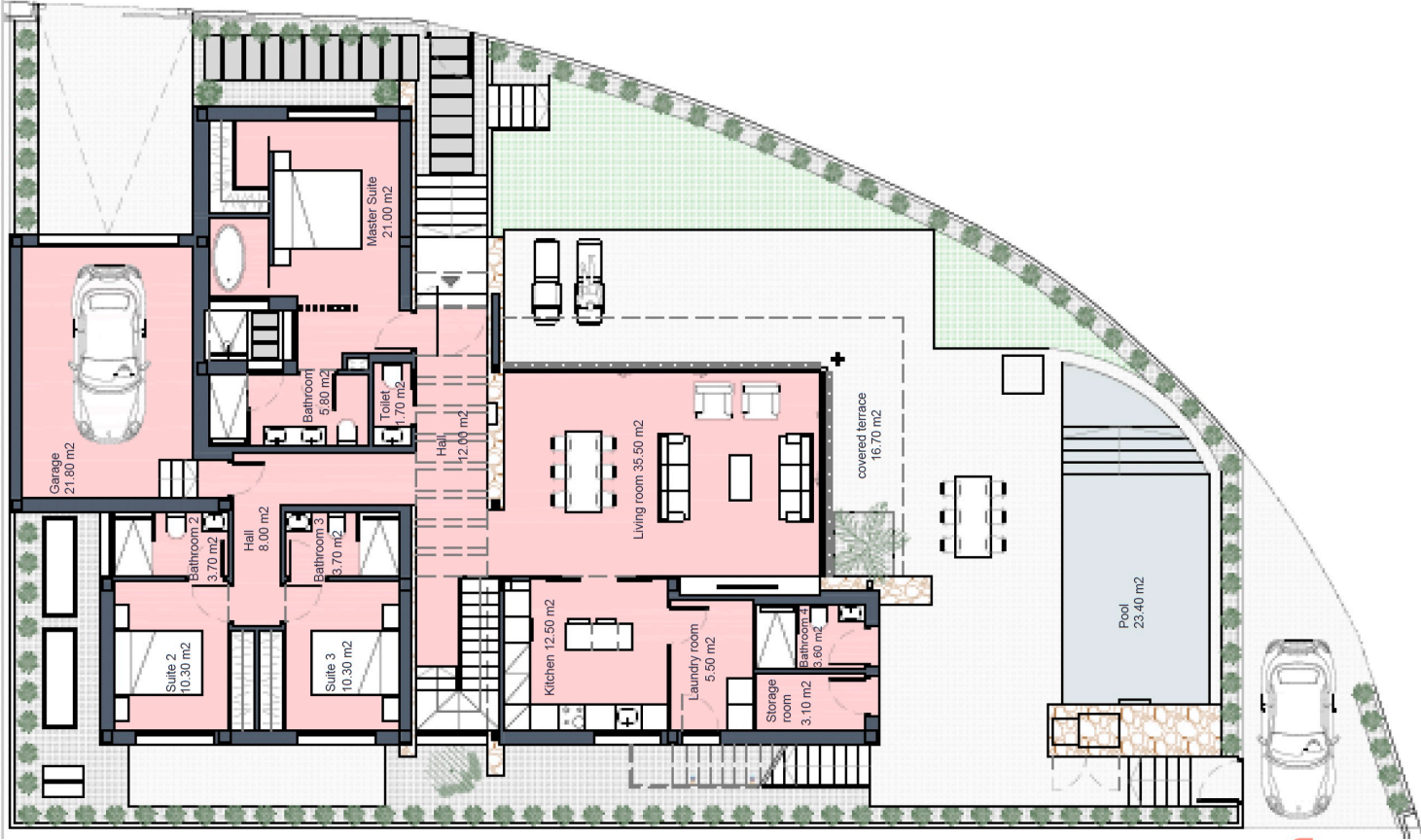




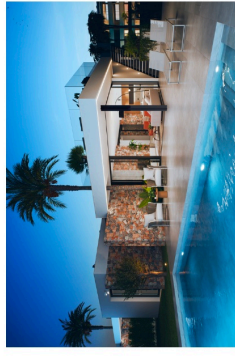
# Périgord

GROUND FLOOR



our signature villa  
santarosalia.life

## Santa Rosalía lake and life resort



### SURFACES

<b>Villa Signature 7</b>	<b>471,32 m<sup>2</sup></b>
Superficie construida	
Ground floor	199,00 m <sup>2</sup>
Basement	145,00 m <sup>2</sup>
<b>INTERIOR VIVIENDA</b>	<b>344,00 m<sup>2</sup></b>
Covered terrace	16,70 m <sup>2</sup>
Uncovered spaces (Ground floor)	255,62 m <sup>2</sup>
Solarium	64,50 m <sup>2</sup>
<b>TOTAL OUTDOOR SPACES</b>	<b>336,82 m<sup>2</sup></b>

Documento de carácter informativo, no contractual. Puede sufrir variaciones por razones técnicas, legales o comerciales. El mobiliario y electrodomésticos son meramente decorativos y no incluidos.

This plan is for illustration purposes only and may be modified for technical, legal or commercial reasons. The furniture and appliances shown are purely decorative and are not included.



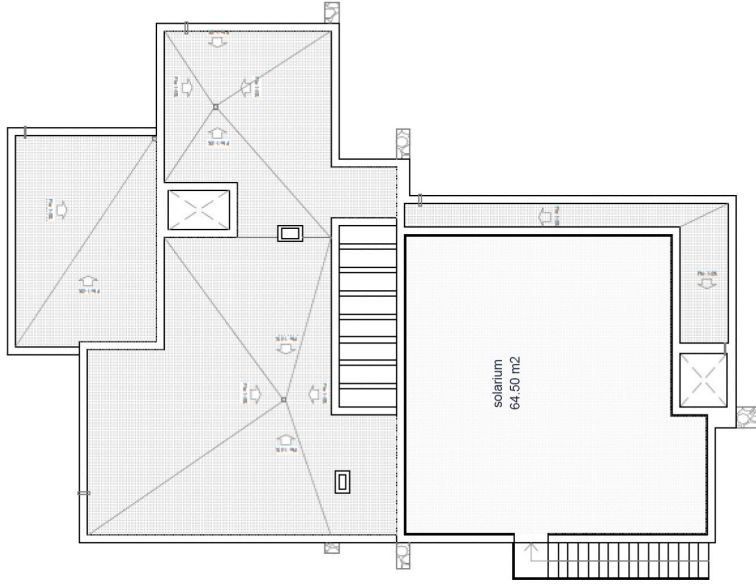
José Díaz García



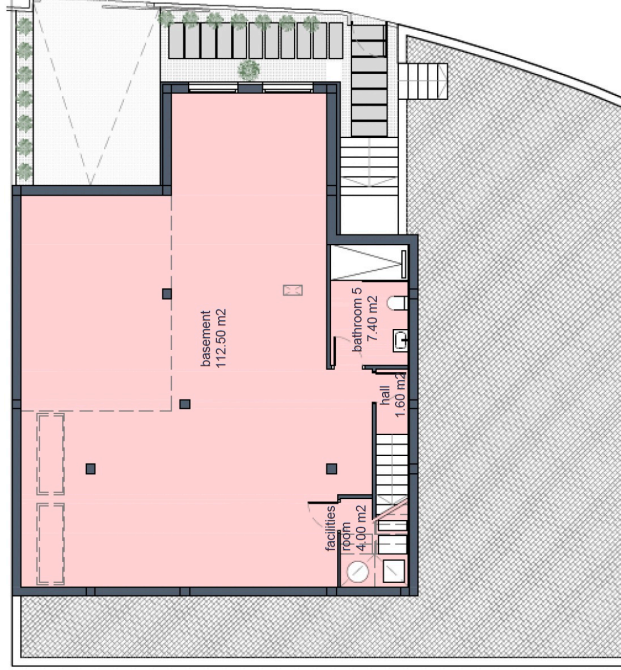


# Périgord

SOLARIUM

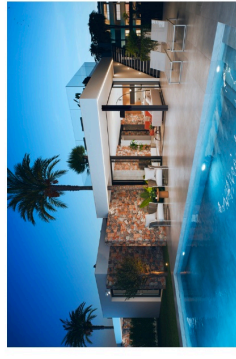


BASEMENT



## Santa Rosalía

lake and life resort



### SURFACES

Villa Signature 7	471,32 m <sup>2</sup>
Superficie construida	
Ground floor	199,00 m <sup>2</sup>
Basement	145,00 m <sup>2</sup>
<b>INTERIOR VIVIENDA</b>	
Covered terrace	16,70 m <sup>2</sup>
Uncovered spaces (Ground floor)	255,62 m <sup>2</sup>
Solarium	64,50 m <sup>2</sup>
<b>TOTAL OUTDOOR SPACES</b>	
	<b>336,82 m<sup>2</sup></b>

Documento de carácter informativo, no contractual. Puede sufrir variaciones por razones técnicas, legales o comerciales. El mobiliario y electrodomésticos son meramente decorativos y no incluidos.

This plan is for illustration purposes only and may be modified for technical, legal or commercial reasons. The furniture and appliances shown are purely decorative and are not included.



José Díaz García

